

Dr. Coffee - Startup & cleaning

2 Daily Cleaning

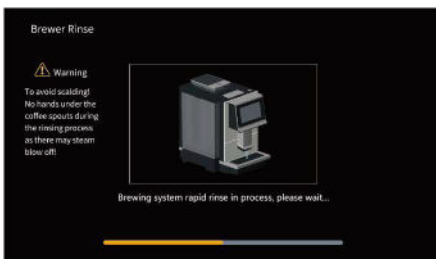
➤ Daily cleaning operations need to be performed daily

1.1 Brewer Rinse



Step 1: click the shortcut menu icon at the top of the screen to enter the shortcut menu interface.

Step 2: click on the “Brewer Rinse” option (far left) on the screen to proceed to the next step.



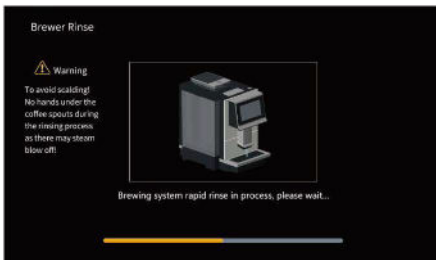
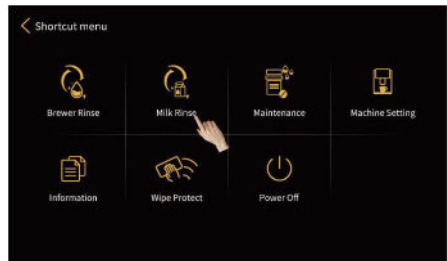
✓ After the Brewer Rinse is completed, you are automatically returned to the main interface

1.2 Milk Rinse



Step 1: click the shortcut menu icon at the top of the screen to enter the shortcut menu interface.

Step 2: click on the “Milk Rinse” option (second from the left) on the screen to proceed to the next step.



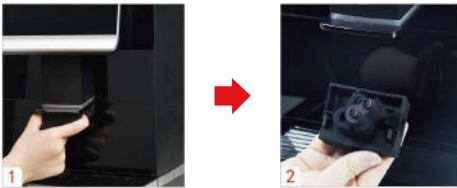
✓ After the Milk Rinse is completed, you are automatically returned to the main interface

1.3 Milk Foamer Disassembly and Cleaning

Step 1: remove the milk tube as shown



Step 2: Pinch the clips on both sides of the milk foamer with your fingers, and then pull down the milk foamer firmly.



Step 3: Disassemble the coffee outlet, milk foamer, connector and other components, and hold them under the faucet for cleaning.



Step 4: Put the cleaned milk foamer part back into the coffee machine as shown in the picture.



Dr. Coffee - Startup & cleaning

1.2 Water pump installation



Step 1: plug in the power cord.

Step 2: insert the pump's rod into the water tank.

Step 3: Attach the pump's final cable to the back of the coffee machine.



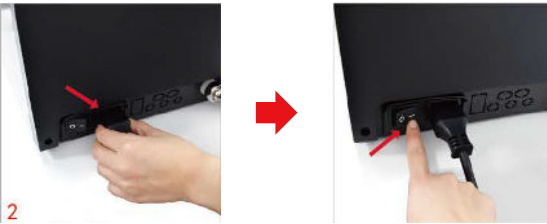
Turn on the pump. The reservoir must have been filled according to the previous page first.

Dr. Coffee - Startup & cleaning

1 Startup

➤ Perform the following steps to ensure the machine's function

1.1 Power & filling



Step 1: plug in the power cord & press the power button on the back of the machine.

Step 2: open the bean lid and add coffee beans.



Open the water lid and add water until the reservoir is 80% full. You can now attach and activate the pump.